

MALLEABLE FITTINGS

BLACK & GALVANIZED MALLEABLE IRON 150#

HEX BUSHING



Hex

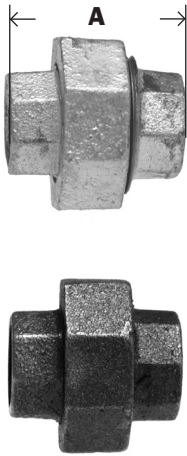


Part # Galvanized	List Price	Size M x F	A	Hex	Box/ Case	Approx. Wt. Lbs.	Part # Black	List Price
		*1/4" x 1/8"	} Use steel fittings for smaller sizes - See page 220					
		*3/8" x 1/8"						
		*3/8" x 1/4"						
64-503	3.93	1/2" x 1/8"	0.84	1.03	100/120	0.10	65-503	2.59
		*1/2" x 1/4"						
64-505	3.93	1/2" x 3/8"	0.75	1.03	100/1200	0.07	65-505	2.43
64-506	4.19	3/4" x 1/8"	0.85	1.15	50/600	0.17	65-506	2.54
64-507	4.05	3/4" x 1/4"	0.85	1.15	50/600	0.16	65-507	2.50
64-508	4.27	3/4" x 3/8"	0.85	1.15	50/600	0.14	65-508	2.54
64-509	3.66	3/4" x 1/2"	0.93	1.15	50/600	0.10	65-509	2.16
64-510	4.39	1" x 1/4"	1.13	1.12	50/400	0.19	65-510	2.99
64-511	6.88	1" x 3/8"	1.13	1.12	50/400	0.24	65-511	3.06
64-512	3.96	1" x 1/2"	1.10	1.42	50/400	0.21	65-512	2.10
64-513	3.52	1" x 3/4"	1.10	1.42	50/400	0.17	65-513	2.10
64-514	6.35	1-1/4" x 1/4"	1.24	1.12	30/240	0.31	65-514	3.84
64-515	6.35	1-1/4" x 3/8"	1.24	1.12	30/240	0.43	65-515	3.43
64-516	5.56	1-1/4" x 1/2"	1.24	1.24	30/240	0.29	65-516	3.30
64-517	5.07	1-1/4" x 3/4"	1.08	1.76	30/240	0.35	65-517	2.95
64-518	5.07	1-1/4" x 1"	1.08	1.76	30/240	0.29	65-518	2.95
64-519	12.88	1-1/2" x 1/4"	1.30	1.12	25/150	0.64	65-519	4.55
64-520	12.88	1-1/2" x 3/8"	1.30	1.12	25/150	0.64	65-520	4.55
64-521	7.38	1-1/2" x 1/2"	1.30	1.34	25/150	0.40	65-521	3.63
64-522	7.38	1-1/2" x 3/4"	1.30	1.44	25/150	0.39	65-522	3.63
64-523	6.63	1-1/2" x 1"	1.23	2.00	25/150	0.46	65-523	3.47
64-524	6.13	1-1/2" x 1-1/4"	1.23	2.00	25/150	0.32	65-524	3.47
64-525	9.78	2" x 3/8"	1.28	1.12	20/120	0.95	65-525	5.68
64-527	9.18	2" x 1/2"	1.39	1.34	20/120	0.84	65-527	5.68
64-528	8.56	2" x 3/4"	1.39	1.63	20/120	0.63	65-528	4.80
64-529	8.10	2" x 1"	1.39	1.77	20/120	0.67	65-529	4.80
64-530	8.10	2" x 1-1/4"	1.50	2.48	20/120	0.73	65-530	4.80
64-531	6.89	2" x 1-1/2"	1.50	2.48	20/120	0.70	65-531	4.80
64-546	20.17	2-1/2" x 1/2"	1.51	1.34	15/60	1.57	65-546	8.12
64-547	13.32	2-1/2" x 3/4"	1.51	1.63	15/60	1.54	65-547	8.12
64-532	19.06	2-1/2" x 1"	1.51	1.95	15/60	1.51	65-532	8.12
64-533	14.20	2-1/2" x 1-1/4"	1.51	2.39	15/60	1.41	65-533	8.12
64-534	13.04	2-1/2" x 1-1/2"	1.51	2.98	15/60	1.37	65-534	8.12
64-535	11.61	2-1/2" x 2"	1.54	2.98	15/60	1.11	65-535	8.12
64-550	17.56	3" x 1"	1.61	1.95	12/48	1.46	65-550	11.82
64-549	20.61	3" x 1-1/4"	1.61	2.39	12/48	2.22	65-549	11.82
64-537	15.65	3" x 1-1/2"	1.61	2.68	12/48	1.96	65-537	11.82
64-538	16.53	3" x 2"	1.61	3.86	12/48	1.91	65-538	11.82
64-539	31.47	3" x 2-1/2"	1.61	3.86	12/48	1.50	65-539	11.10
64-551	49.28	4" x 3/4"	2.15	4.90	5/20	4.50	65-551	28.20
64-553	39.31	4" x 1"	2.00	4.75	5/20	4.00	65-553	24.33
64-540	43.73	4" x 1-1/2"	1.82	2.68	5/20	3.91	65-540	23.68
64-541	32.49	4" x 2"	1.82	3.31	5/20	2.89	65-541	23.19
64-542	36.84	4" x 2-1/2"	2.06	3.87	5/20	2.77	65-542	22.12
64-543	33.31	4" x 3"	2.17	4.96	5/20	3.03	65-543	22.12
64-545	70.75	6" x 4"	2.33	5.79	4/8	5.69	65-545	61.96

NIPPLES & FITTINGS

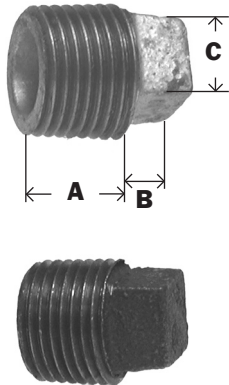


UNIONS



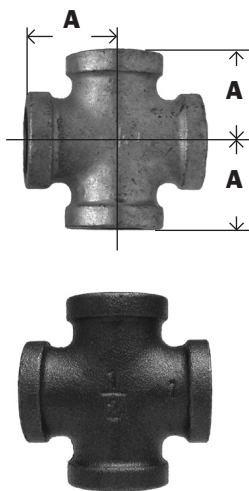
Part # Galvanized	List Price	Size	A	Box/ Case	Approx. Wt. Lbs.	Part # Black	List Price
64-600	12.21	1/8"	1.26	30/360	0.19	65-600	10.16
64-601	11.82	1/4"	1.44	20/240	0.20	65-601	9.34
64-602	7.87	3/8"	1.61	20/240	0.35	65-602	7.55
64-603	7.50	1/2"	1.72	50/200	0.43	65-603	5.68
64-604	8.23	3/4"	1.94	35/140	0.63	65-604	7.38
64-605	10.28	1"	2.06	20/80	0.91	65-605	8.85
64-606	15.93	1-1/4"	2.26	15/60	1.35	65-606	11.82
64-607	19.67	1-1/2"	2.41	10/40	1.75	65-607	15.49
64-608	25.49	2"	2.75	6/24	2.62	65-608	21.92
64-609	77.05	2-1/2"	3.22	8/16	4.40	65-609	56.31
64-610	107.84	3"	3.50	7/14	5.63	65-610	65.26
64-611	233.62	4"	3.85	7	10.31	65-611	171.47

SQUARE HEAD PLUGS



Part # Galvanized	List Price	Size	A	B	C	Box/ Case	Approx. Wt. Lbs.	Part # Black	List Price
		*1/8"	} Use steel fittings for smaller sizes - see p. 220						
		*1/4"							
		*3/8"							
64-653	1.76	1/2"	0.58	0.38	0.56	50/600	0.09	65-653	1.05
64-654	2.74	3/4"	0.65	0.44	0.63	30/360	0.13	65-654	1.17
64-655	2.50	1"	0.75	0.50	0.82	20/240	0.22	65-655	1.64
64-656	4.20	1-1/4"	0.82	0.56	0.94	40/240	0.40	65-656	2.50
64-657	5.69	1-1/2"	0.85	0.62	1.13	30/180	0.46	65-657	3.03
64-658	7.04	2"	0.91	0.68	1.31	20/120	0.74	65-658	3.88
64-659	13.90	2-1/2"	1.26	0.74	1.50	16/64	1.24	65-659	9.15
64-660	19.11	3"	1.16	0.80	1.69	16/48	1.69	65-660	12.97
64-661	24.65	4"	1.22	1.00	2.28	8/16	2.70	65-661	27.01

CROSSES



Part # Galvanized	List Price	Size	A	Box/ Case	Approx. Wt. Lbs.	Part # Black	List Price
64-390	11.71	1/8"	0.65	---	0.12	65-390	9.23
64-391	11.71	1/4"	0.80	40/480	0.18	65-391	7.90
64-392	11.71	3/8"	0.95	25/300	0.27	65-392	7.90
64-393	11.71	1/2"	1.12	30/180	0.45	65-393	7.90
64-394	13.03	3/4"	1.31	20/120	0.69	65-394	9.01
64-395	14.73	1"	1.50	15/60	1.06	65-395	10.01
64-396	21.33	1-1/4"	1.75	20/40	1.56	65-396	16.27
64-397	25.89	1-1/2"	1.94	18/36	1.91	65-397	20.14
64-398	49.39	2"	2.25	10/20	3.24	65-398	33.34
64-399	123.42	2-1/2"	2.71	1/12	5.55	65-399	74.96
64-400	166.25	3"	3.06	1/8	8.00	65-400	119.49

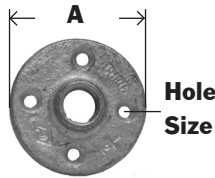
CAPS



Part # Galvanized	List Price	Size	A	Box/ Case	Approx. Wt. Lbs.	Part # Black	List Price
		1/4"	0.62	80/960	0.05	65-471	1.17
64-472	2.37	3/8"	0.74	60/720	0.08	65-472	1.39
64-473	1.81	1/2"	0.87	50/600	0.13	65-473	1.44
64-474	2.60	3/4"	0.97	40/320	0.22	65-474	1.90
64-475	2.88	1"	1.16	25/200	0.37	65-475	2.10
64-476	4.19	1-1/4"	1.28	20/160	0.49	65-476	2.99
64-477	5.34	1-1/2"	1.33	18/108	0.64	65-477	4.07
64-478	6.75	2"	1.45	12/72	1.00	65-478	5.02
64-479	21.46	2-1/2"	1.70	28/56	1.45	65-479	12.49
64-480	25.99	3"	1.80	18/36	2.20	65-480	19.72
64-481	51.61	4"	2.08	7/21	3.75	65-481	30.79
64-482	187.85	6"	2.55	4/8	8.86	65-482	123.90

* Use steel fittings for smaller sizes. See page 220 for Galvanized and Black Steel Fittings.

FLOOR FLANGES



Part # Galvanized	List Price	Size	A	Thickness	Hole Size	Box/ Case	Approx. Wt. Lbs.	Part # Black	List Price
64-692	11.06	1/2"	3.50	0.50	0.25	25/100	0.63	65-692	5.10
64-693	12.35	3/4"	3.50	0.63	0.25	15/90	0.75	65-693	5.51
64-694	13.58	1"	4.00	0.69	0.25	15/60	1.06	65-694	7.63
64-695	15.48	1-1/4"	4.00	0.75	0.25	10/60	1.08	65-695	8.85
64-696	19.32	1-1/2"	4.50	0.87	0.31	8/48	1.43	65-696	9.72
64-697	25.44	2"	5.50	1.00	0.31	8/32	2.23	65-697	12.55

STEEL MAGNETIC PLUGS

Magnetic Plugs

Steel Magnetic Drain Plugs - NPT Threaded

Magnetic Drain Plugs are similar to standard pipe or straight thread drain plugs with one important difference - a permanent magnet is fastened to the plug body. This magnet attracts and holds abrasive, ferrous metal particles preventing their circulation through the lubrication or hydraulic system.

These abrasive, ferrous metal particles appear in lubricating or hydraulic systems as a result of the following conditions:

- The constant flaking effect of normal wear of moving parts.
- Particles not removed by flushing operations after boring or machining.
- Chipping due to sub-surface casting flaws.
- Minute component breakdown caused by stress usage.

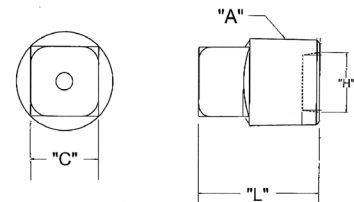


Magnetic Drain Plugs prevent excessive wear to the system's components.

Magnetic Plugs are used by numerous manufacturers of gear boxes, transmissions, engines, and hydraulic systems for the automotive, aircraft, agricultural and machinery industries. Typical applications include:

- Outbound Engines
- Earthmoving Equipment
- Combines
- Balers
- Crawler Tractors
- Lift Trucks
- Mining Equipment
- Military Vehicles
- Turbine Engines
- Truck Axles
- Heavy-Duty Transmissions

Part	Size "A"	Head Width "C"	Recess Dia. "H"	O/L Length "L"	List Price
28-996	3/8 - 18	.428 - .440	.435 - .445	.805 - .860	2.65
28-997	1/2 - 14	.553 - 565	.560 - .570	.970 - 1.04	3.17
28-998	3/4 - 14	.615 - .627	.725 - .735	1.120 - 1.170	4.01
28-999	1-11 1/2	.803 - 815	.895 - .905	1.25 - 1.33	6.05



BLACK & GALVANIZED STEEL FITTINGS

STEEL FITTINGS

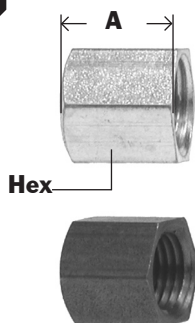
HEX BUSHINGS



Part # Galvanized	List Price	Size M x F	A	Hex	Approx. Wt. Lbs.	Part # Black	List Price
66-500	1.13	1/4" x 1/8"	0.63	0.62	0.02	67-500	1.38
66-501	1.33	3/8" x 1/8"	0.66	0.68	0.04	67-501	1.78
66-502	1.33	3/8" x 1/4"	0.66	0.68	0.02	67-502	1.78
66-503	2.05	1/2" x 1/8"	0.80	0.87	0.10	67-503	1.94
66-504	2.05	1/2" x 1/4"	0.80	0.87	0.08	67-504	1.94
66-505	2.05	1/2" x 3/8"	0.80	0.87	0.06	67-505	1.94
66-506	3.28	3/4" x 1/8"	0.94	1.06	0.18	67-506	2.97
66-507	3.28	3/4" x 1/4"	0.94	1.06	0.14	67-507	2.97
66-508	3.28	3/4" x 3/8"	0.94	1.06	0.14	67-508	2.97
66-509	3.28	3/4" x 1/2"	0.94	1.06	0.10	67-509	2.97
66-510	6.16	1" x 1/4"	1.00	1.31	0.16	67-510	5.23
66-511	6.16	1" x 3/8"	1.00	1.31	0.26	67-511	5.23
66-512	6.16	1" x 1/2"	1.00	1.31	0.22	67-512	5.23
66-513	6.16	1" x 3/4"	1.00	1.31	0.14	67-513	5.23

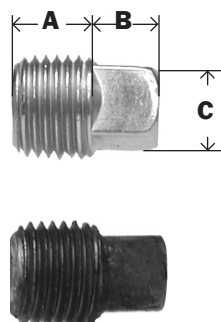
NIPPLES & FITTINGS

CAPS



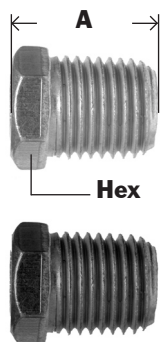
Part # Galvanized	List Price	Size	A	Hex	Approx. Wt. Lbs.	Part # Black	List Price
66-470	1.04	1/8"	0.53	0.56	0.02	67-470	0.92
66-471	1.11	1/4"	0.63	0.62	0.04	67-471	1.12
66-472	1.86	3/8"	0.69	0.81	0.06	67-472	1.75
66-473	3.10	1/2"	0.87	1.00	0.12	67-473	2.68
66-474	4.42	3/4"	0.97	1.18	0.16	67-474	3.91
66-475	6.37	1"	1.16	1.50	0.30	67-475	5.42
NEW 66-476	28.75	1-1/4"	1.28	2.00	0.68	67-476	26.03
NEW 66-477	39.05	1-1/2"	1.35	2.25	0.83	67-477	35.80
NEW 66-478	46.81	2"	1.45	2.625	1.36	67-478	

SQUARE HEAD PLUGS



Part # Galvanized	List Price	Size	A	B	C	Approx. Wt. Lbs.	Part # Black	List Price
		1/16"	0.33	0.18	0.22	0.01	67-669	0.42
66-670	0.46	1/8"	0.33	0.24	0.28	0.01	67-670	0.42
66-671	0.51	1/4"	0.45	0.28	0.37	0.02	67-671	0.40
66-672	0.80	3/8"	0.50	0.31	0.43	0.04	67-672	0.64
66-653	1.24	1/2"	0.59	0.38	0.55	0.12	67-653	1.12
66-654	1.80	3/4"	0.63	0.44	0.62	0.18	67-654	1.64
NEW 66-655	6.65	1"	0.75	0.5	0.81	0.34	67-655	5.89
NEW 66-656	11.88	1-1/4"	0.80	0.56	0.93	0.62	67-656	10.06
NEW 66-657	17.37	1-1/2"	0.83	0.62	1.12	0.82	67-657	15.23
NEW 66-658	23.77	2"	0.88	0.68	1.31	1.36	67-658	20.72

HEX HEAD PLUGS



Part # Galvanized	List Price	Size	A	Hex	Approx. Wt. Lbs.	Part # Black	List Price
66-770	0.42	1/8"	0.55	0.43	0.01	67-770	0.32
66-771	0.68	1/4"	0.74	0.56	0.04	67-771	0.62
66-772	1.23	3/8"	0.67	0.68	0.06	67-772	1.12
66-773	2.06	1/2"	0.80	0.70	0.12	67-773	1.86
66-774	3.19	3/4"	0.94	1.06	0.18	67-774	2.97
66-775	6.79	1"	1.00	1.31	0.22	67-775	5.23
NEW 66-776	9.75	1-1/4"	1.17	1.75	0.7	67-776	8.89
NEW 66-777	23.59	1-1/2"	1.51	2.00	1.2	67-777	18.71
NEW 66-778	40.41	2"	1.65	2.50	2.06	67-778	34.44

