

External Swage Ferrules

The selection of ferrules is very important to achieve the proper coupling-to-hose assembly.

- ferrules are plated carbon steel
- style F ferrules are used with all standard length male stems
- style FL ferrules are extra long and are used with all long style stems



6-hole design

Hose ID	Hose OD		Plated Carbon Steel		Long Style Plated Carbon Stl.	
	from	to	Part #	Price/E	Part #	Price/E
1¼"	1-44/64"	1-48/64"	F20-1	\$41.20	FL20-1	\$61.45
	1-49/64"	1-56/64"	F20-2	41.20	FL20-2	61.45
	1-57/64"	2"	F20-3	47.15	FL20-3	61.45
	2-1/64"	2-8/64"	F20-4	47.15	FL20-4	61.45
1½"	1-58/64"	2"	F24-1	36.25	FL24-1	56.85
	2-1/64"	2-8/64"	F24-2	36.25	FL24-2	56.85
	2-9/64"	2-16/64"	F24-3	39.20	FL24-3	56.85
	2-17/64"	2-24/64"	F24-4	41.60	FL24-4	56.85
2"	2-25/64"	2-32/64"	F24-5	41.60	FL24-5	56.85
	2-28/64"	2-40/64"	F32-1	36.50	FL32-1	55.35
	2-41/64"	2-48/64"	F32-2	36.50	FL32-2	55.35
	2-49/64"	2-56/64"	F32-3	43.00	FL32-3	55.35
2½"	2-57/64"	3-2/64"	F32-4	43.00	FL32-4	55.35
	2-62/64"	3-8/64"	F40-1	56.55	FL40-1	77.65
	3-9/64"	3-16/64"	F40-2	56.55	FL40-2	77.65
	3-17/64"	3-24/64"	F40-3	56.55	FL40-3	77.65
3"	3-25/64"	3-32/64"	F40-4	70.00	FL40-4	77.65
	3-33/64"	3-40/64"	F40-5	70.00	FL40-5	77.65
	3-30/64"	3-40/64"	F48-1	47.25	FL48-1	89.70
	3-41/64"	3-48/64"	F48-2	51.50	FL48-2	89.70
4"	3-49/64"	3-56/64"	F48-3	54.30	FL48-3	89.70
	3-57/64"	4"	F48-4	71.00	FL48-4	89.70
	4-1/64"	4-8/64"	F48-5	68.00	FL48-5	89.70
	4-30/64"	4-39/64"	F64-Z ¹	90.00	FL64-Z ²	114.70
5"	4-40/64"	4-44/64"	F64-1	90.00	FL64-1	114.70
	4-45/64"	4-52/64"	F64-2	90.00	FL64-2	114.70
	4-53/64"	4-60/64"	F64-3	90.00	FL64-3	114.70
	4-61/64"	5-4/64"	F64-4	90.00	FL64-4	114.70
	5-5/64"	5-12/64"	F64-5	101.20	FL64-5	114.70
	5-13/64"	5-20/64"	F64-6	101.20	FL64-6	114.70
	5-21/64"	5-28/64"	F64-7	101.20	FL64-7	114.70
	5-29/64"	5-36/64"	F64-8	101.20	FL64-8	114.70
6"	5-56/64"	5-60/64"	F80-1	233.75	FL80-1	POR
	5-61/64"	6-4/64"	F80-2	233.75	FL80-2	POR
	6-5/64"	6-12/64"	F80-3	250.00	FL80-3	POR
	6-13/64"	6-20/64"	F80-4	POR	FL80-4	POR
	6-21/64"	6-28/64"	F80-5	POR	FL80-5	POR
	6-29/64"	6-38/64"	F80-6	POR	FL80-6	POR
	6-37/64"	6-44/64"	F80-7	POR	FL80-7	POR

2-hole design

Hose ID	Hose OD		Plated Carbon Steel		Long Style Plated Carbon Stl.	
	from	to	Part #	Price/E	Part #	Price/E
6"	6-44/64"	6-63/64"	F96-Z	\$221.25	FL96-Z	\$304.75
	7"	7-4/64"	F96-1	228.85	FL96-1	304.75
	7-5/64"	7-12/64"	F96-2	228.85	FL96-2	304.75
	7-13/64"	7-20/64"	F96-3	228.85	FL96-3	304.75
	7-21/64"	7-28/64"	F96-4	241.50	FL96-4	304.75
	7-29/64"	7-36/64"	F96-5	241.50	FL96-5	304.75
	7-37/64"	7-44/64"	F96-6	255.30	FL96-6	304.75
	7-45/64"	7-52/64"	F96-7	255.30	FL96-7	304.75
	7-53/64"	7-60/64"	F96-8	255.30	FL96-8	304.75
8"	7-61/64"	8"	F96-9	255.30	FL96-9	304.75
	9"	9-9/64"	F128-Y	375.00	FL128-Y	POR
	9-20/64"	9-24/64"	F128-1	375.00	FL128-1	POR
	9-25/64"	9-32/64"	F128-2	375.00	FL128-2	POR
	9-33/64"	9-40/64"	F128-3	375.00	FL128-3	POR
	9-41/64"	9-48/64"	F128-4	418.00	FL128-4	POR
	9-49/64"	9-56/64"	F128-5	418.00	FL128-5	POR
	9-57/64"	10"	F128-6	418.00	FL128-6	POR
	10-1/64"	10-4/64"	F128-7	418.00	FL128-7	POR
10"	11-32/64"	11-44/64"	F160-1	701.50	FL160-1	POR
	11-45/64"	11-60/64"	F160-2	701.50	FL160-2	POR
	11-61/64"	12-12/64"	F160-3	POR	FL160-3	POR
	12-13/64"	12-28/64"	F160-4	POR	FL160-4	POR
	12-29/64"	12-44/64"	F160-5	POR	FL160-5	POR
	12-45/64"	12-60/64"	F160-6	POR	FL160-6	POR

For applications with hose OD ranges not listed, call the factory.

¹ requires special stem: **TM64-42 \$97.75**

² requires special stem: **TML64-42 \$115.00**

Holedall II External Swage Ferrules

For use with Royal-Flex™ thin wall hose. These specially designed carbon steel ferrules have serrations on the outside and should be used with stem styles TM, TP and TG stems on page 350.



Hose ID	Hose OD		Carbon Steel	
	from	to	Part #	Price/E
1½"	1-58/64"	2-2/64"	FW24	\$74.75
2"	2-28/64"	2-34/64"	FW32	80.50
3"	3-30/64"	3-38/64"	FW48	93.15
4"	4-30/64"	4-42/64"	FW64¹	98.90

¹ 4" takes special stem; **TM64-42, \$97.75**

Stainless External Swage Ferrules

Light duty 304 stainless ferrules for use with standard length stems such as the TMR series. Consult Dixon for die recommendations. See page 8-11 for specific pressure recommendations.



Hose ID	Hose OD		304 Stainless Steel	
	from	to	Part #	Price/E
1½"	1-60/64"	2-12/64"	GAS2334TO	\$41.50
	2-4/64"	2-22/64"	GAS2370TO	41.50
2"	2-30/64"	2-44/64"	GAS2709TO	32.90
	2-42/64"	2-54/64"	GAS2885TO	65.25
3"	3-30/64"	3-46/64"	GAS3760TO	52.00
	3-47/64"	3-54/64"	GAS3885TO	68.50
4"	4-40/64"	4-47/64"	GAS5010TO	268.15

External Swage Notched NOS Stems and Ferrules

- The largest advantage of the notched design is that the coupling can be removed from a damaged hose by cutting away the ferrule, without necessarily damaging the fitting. *After inspection of the fitting to determine its suitability for reuse, it can be reinstalled into another hose by using a new ferrule.*
- The notched system allows you to better manage your inventories. You can stock one stem and two ferrules, and cover the same hose range with less inventory. *You must purchase a stem and the matching ferrule to create an assembly.*
- For hose outside diameters of 2-4/64" and below, *the couplings are crimp only.*
- For hose outside diameters of 2-5/64" and above, the couplings can be crimped or swaged.
- See page 36 for cam and groove style notched NOS fittings.

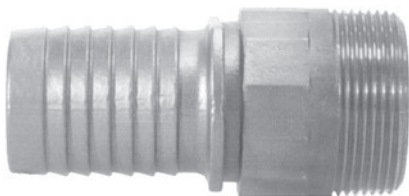
SAFETY
ALERT

SAFETY
ALERT

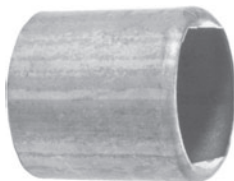
SAFETY
ALERT

Only use the NOS shank with the NOS ferrules. Due to differences in dimensions and tolerances for safety reasons, do not use other manufacturer's stems or ferrules with Dixon Holedall products.

SAFETY
ALERT



with wrench flats



male NPT stems

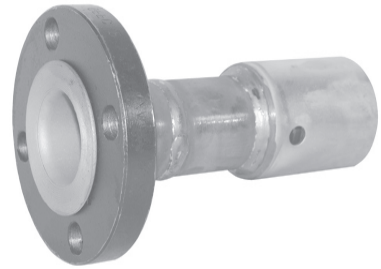
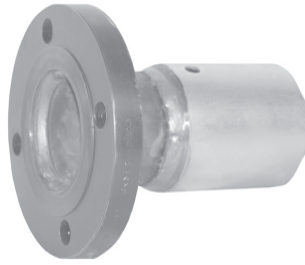
Hose ID	316 Stainless Steel		Price/E
	Part #		
1½"	RST150NOS		\$40.75
2"	RST200NOS		48.25
3"	RST300NOS		100.00
4"	RST400NOS		160.00

ferrules

Hose ID	Hose OD		304 Stainless Steel	
	from	to	Part #	Price/E
1½"	1-60/64"	2-12/64"	GAS2334NOS	\$31.00
	2-4/64"	2-22/64"	GAS2370NOS	33.00
2"	2-30/64"	2-44/64"	GAS2709NOS	30.00
	2-42/64"	2-54/64"	GAS2885NOS	59.00
3"	3-30/64"	3-46/64"	GAS3760NOS	45.00
	3-47/64"	3-54/64"	GAS3885NOS	61.50
4"	4-40/64"	4-47/64"	GAS5010NOS	235.00

External Swage Flanged Assemblies

- 150# ASA flange drilling available with carbon steel stem, ferrule and flange, or 316 stainless steel stem, flange and carbon steel ferrule
- available in other sizes, consult the factory for pricing



fixed flange

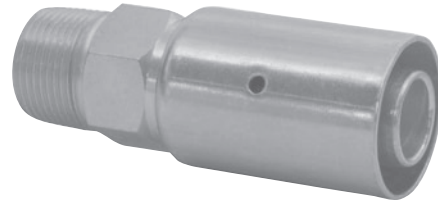
floating flange

Hose ID	Hose OD		Carbon Steel		Stainless Steel		Carbon Steel		Stainless Steel	
	from	to	Part #	Price/E	Part #	Price/E	Part #	Price/E	Part #	Price/E
2"	2-36/64"	2-40/64"	32P1SO15	\$203.55	R32P1SOR15	\$425.00	32P1LJ15	\$251.20	R32P1LJR15	\$495.00
	2-41/64"	2-48/64"	32P2SO15	203.55	R32P2SOR15	425.00	32P2LJ15	251.20	R32P2LJR15	495.00
	2-49/64"	2-56/64"	32P3SO15	203.55	R32P3SOR15	425.00	32P3LJ15	251.20	R32P3LJR15	495.00
3"	3-36/64"	3-40/64"	48P1SO15	260.00	R48P1SOR15	580.00	48P1LJ15	280.00	R48P1LJR15	665.00
	3-41/64"	3-48/64"	48P2SO15	260.00	R48P2SOR15	580.00	48P2LJ15	280.00	R48P2LJR15	665.00
	3-49/64"	3-56/64"	48P3SO15	260.00	R48P3SOR15	580.00	48P3LJ15	280.00	R48P3LJR15	665.00
4"	4-40/64"	4-44/64"	64P1SO15	340.00	R64P1SOR15	845.00	64P1LJ15	435.00	R64P1LJR15	1197.00
	4-45/64"	4-52/64"	64P2SO15	340.00	R64P2SOR15	845.00	64P2LJ15	435.00	R64P2LJR15	1197.00
	4-53/64"	4-60/64"	64P3SO15	340.00	R64P3SOR15	845.00	64P3LJ15	435.00	R64P3LJR15	1197.00
6"	7"	7-4/64"	96P1SO15	652.00	R96P1SOR15	1542.00	96P1LJ15	820.00	R96P1LJR15	1800.00
	7-5/64"	7-12/64"	96P2SO15	652.00	R96P2SOR15	1542.00	96P2LJ15	820.00	R96P2LJR15	1800.00
	7-13/64"	7-20/64"	96P3SO15	652.00	R96P3SOR15	1542.00	96P3LJ15	820.00	R96P3LJR15	1800.00
8"	9-20/64"	9-24/64"	128P1SO15	950.00	---	---	128P1LJ15	1110.00	---	---
	9-25/64"	9-32/64"	128P2SO15	950.00	---	---	128P2LJ15	1110.00	---	---
	9-33/64"	9-40/64"	128P3SO15	950.00	---	---	128P3LJ15	1110.00	---	---

External Swage Uni-Range Male Couplings

Designed for smaller hose systems, these couplings may be used for hose ID's of 1/4" - 1" and come complete with factory assembled stem and ferrule combination.

- can be swaged or crimped
- other hose OD's available, consult the factory
- stainless steel stems are investment cast



- plated carbon steel stem and ferrule

Hose ID	Hose OD		Plated Carbon Steel	
	from	to	Part #	Price/E
1/4"	34/64"	38/64"	4P1	\$15.00
	38/64"	42/64"	4P2	15.00
	42/64"	46/64"	4P3	15.00
3/8"	46/64"	50/64"	6P1	19.40
	50/64"	54/64"	6P2	19.40
	54/64"	58/64"	6P3	19.40
1/2"	54/64"	58/64"	8P1	20.00
	58/64"	62/64"	8P2	20.00
	62/64"	1-2/64"	8P3	20.00
3/4"	1-10/64"	1-14/64"	12P1	21.00
	1-14/64"	1-18/64"	12P2	21.00
	1-18/64"	1-22/64"	12P3	21.00
1"	1-30/64"	1-34/64"	16P1	26.00
	1-34/64"	1-38/64"	16P2	26.00
	1-38/64"	1-42/64"	16P3	26.00
	1-42/64"	1-46/64"	16P4	26.00

- 316 stainless steel stem, plated carbon steel ferrule

Hose ID	Hose OD		Stainless/Carbon Steel	
	from	to	Part #	Price/E
3/4"	1-10/64"	1-14/64"	R12P1	\$57.90
	1-14/64"	1-18/64"	R12P2	57.90
	1-18/64"	1-22/64"	R12P3	57.90
1"	1-30/64"	1-34/64"	R16P1	101.90
	1-34/64"	1-38/64"	R16P2	101.90
	1-38/64"	1-42/64"	R16P3	101.90
	1-42/64"	1-46/64"	R16P4	101.90

- 316 stainless steel stem, 304 stainless steel ferrule

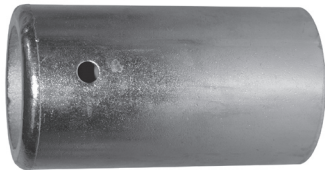
Hose ID	Hose OD		Stainless Steel	
	from	to	Part #	Price/E
1/2"	58/64"	58/64"	R8P2SS	\$110.00
	1-6/64"	1-6/64"	R12P1250	88.20
3/4"	1-13/64"	1-13/64"	R12P1370	88.20
	1-30/64"	1-30/64"	R16P1620	115.00
1"	1-38/64"	1-38/64"	R16P1770	115.00

External Swage High Pressure Couplings

These couplings are for services requiring a fitting which will withstand extremely high pressures (up to **3,000 PSI**) and severe operating conditions, such as on small and medium size drilling rigs, used for slim hole, core drill, workover, seismograph, water well, blast or shot holes, etc. These long, rugged fittings are machined from seamless pipe and tubing with specially designed serrations. The mating ferrules are machined from heavy wall material incorporating matching serrations. These couplings are shipped with matching ferrules. Please provide hose OD when ordering for properly sized ferrule. Make sure both ends of the hose are measured for OD. Must be swaged with 50 Ton or 100 Ton Ram.

- An accurate hose OD must be provided to complete the part # and to ensure proper retention.
- The LM fittings are sold as a complete coupling, including stem and ferrule.
- API and NPT sizes are interchangeable

Stem and Ferrule Complete Assemblies



NPT Male Threaded Couplings

Hose ID	NPT Size	Zinc Plated Steel	
		Part #	Price/E
2"	2"	LM32-*	\$322.00
2½"	2½"	LM40-*	374.00
3"	3"	LM48-*	422.00

API Male Threaded Couplings

Hose ID	API Size	Zinc Plated Steel	
		Part #	Price/E
2"	2½"	LM3240-*	POR
2½"	3"	LM4048-*	POR
3"	4"	LM4864-*	POR

Holedall Internal Expansion Couplings

The Dixon Internally Expanded Couplings are essential when maximum flow is important. Only one expansion tool is needed for each hose ID. Some recommended applications of these fittings are: concrete pump hose, plaster and grout hose, oil suction and discharge hose, multi-purpose heavy duty air hose, jetting hose, barge loading hose and bottom loading hose.

Benefits of Internal Expansion Fittings:

- maximum flow of media
- reduction of turbulence through hose
- excellent sealing and retention characteristics
- outperforms band clamps
- easy and consistent installation

End Configurations Available:

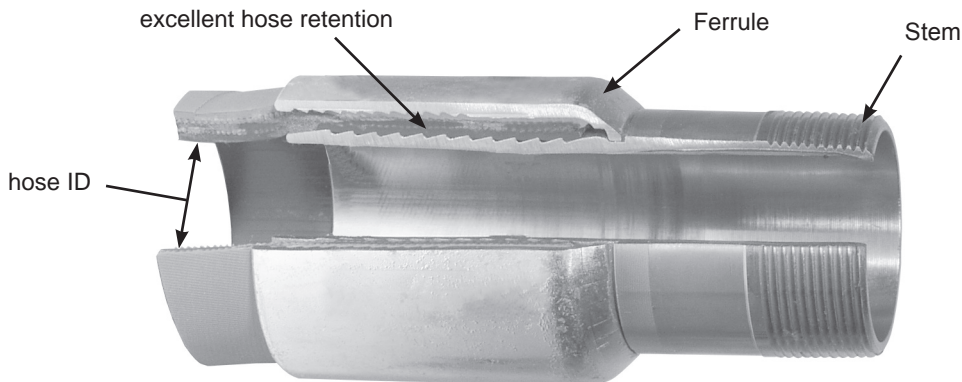
- male NPT
- raised California
- victaulic
- others available on request

Dixon Holedall stems and ferrules are specifically designed to be used together as a coupling system.

SAFETY
ALERT

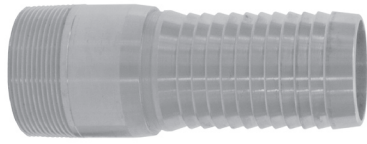
Due to differences in dimensions and tolerances, for safety reasons, do not use other manufacturer's stems or ferrules with Dixon Holedall products.

SAFETY
ALERT

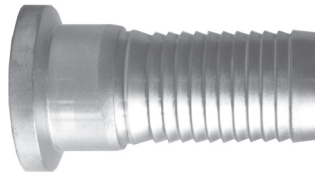


Cross-section of Holedall internally expanded assembly

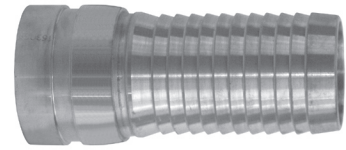
Internal Expansion Stems



male pipe end



heavy duty raised end



grooved end

Size	Carbon Steel	
	Part #	Price/E
1"	IXM16	\$52.80
1¼"	IXM20	57.10
1½"	IXM24	46.90
2"	IXM32	52.00
2½"	IXM40	72.10
3"	IXM48	94.40
4"	IXM64	127.25
6"	IXM96	165.00 <small>NEW</small>

Size	Carbon Steel	
	Part #	Price/E
1½"	IXH24	\$90.00
2"	IXH32	92.00
2½"	IXH40	122.00
3"	IXH48	148.65
4"	IXH64	210.00

Size	Carbon Steel	
	Part #	Price/E
1¼"	IXV20	\$52.20
1½"	IXV24	51.50
2"	IXV32	52.00
2½"	IXV40	73.00
3"	IXV48	104.50
4"	IXV64	150.00

Butt Weld x Heavy Duty Raised End (California Style)

Beveled design for welding to Schedule 40 pipe allows connection to a heavy duty raised end (California style) hose fitting or similar style end.

Size	Length	California style end	
		Part #	Price/E
1½"	1½"	HDE24	\$41.10
2"	1½"	HDE32	41.50
2½"	1½"	HDE40	51.70
3"	1½"	HDE48	54.90
4"	1½"	HDE64	66.25
5"	1½"	HDE80	82.00 <small>NEW</small>



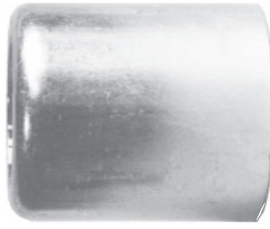
Clamps for IXH Raised End (California Style) Stems

Drop-forged steel clamps for fast assembly when connecting heavy-duty raised end fittings used for concrete. These clamps can be used to connect the ends of pipes or hoses which use the Raised End or California style fittings listed above. Shipped with double lipped gasket and safety pin. 1½" through 3" are galvanized; 4" and 5" are painted green. Clamp should only be used with safety pin in place.

Hose ID	Forged Steel Clamps		Buna-N Gaskets	
	Part #	Price/E	Part #	Price/E
1½"	IXHC150	\$127.70	IXHCG150	\$14.35
2"	IXHC200	129.60	IXHCG200	14.35
2½"	IXHC250	142.50	IXHCG250	14.35
3"	IXHC300	159.00	IXHCG300	17.90
4"	IXHC400	204.25	IXHCG400	17.90
5"	IXHC500 <small>NEW</small>	221.00	IXHCG500 <small>NEW</small>	20.75



Internal Expansion Ferrules



Hose ID	Hose OD		Ferrule Size	Plated Carbon Steel	
	from	to		Part #	Price/E
1"	1-24/64"	1-28/64"	1-7/16"	IXF16-1	\$37.50
	1-28/64"	1-32/64"	1-1/2"	IXF16-2	37.50
	1-32/64"	1-36/64"	1-9/16"	IXF16-3	37.50
1 1/4"	1-40/64"	1-44/64"	1-11/16"	IXF20-Z	37.15
	1-44/64"	1-48/64"	1-3/4"	IXF20-1	37.15
	1-48/64"	1-52/64"	1-13/16"	IXF20-2	37.15
	1-52/64"	1-56/64"	1-7/8"	IXF20-3	37.15
	1-56/64"	1-60/64"	1-15/16"	IXF20-4	37.15
	1-60/64"	2"	2"	IXF20-5	37.15
1 1/2"	2"	2-4/64"	2-1/16"	IXF20-6	37.15
	1-56/64"	1-60/64"	1-15/16"	IXF24-Z	35.85
	1-60/64"	2"	2"	IXF24-1	35.85
	2"	2-4/64"	2-1/16"	IXF24-2	35.85
	2-4/64"	2-8/64"	2-1/8"	IXF24-3	35.85
	2-8/64"	2-12/64"	2-3/16"	IXF24-4	35.85
	2-12/64"	2-16/64"	2-1/4"	IXF24-5	35.85
	2-16/64"	2-20/64"	2-5/16"	IXF24-6	35.85
	2-20/64"	2-24/64"	2-3/8"	IXF24-7	35.85
	2"	2-32/64"	2-36/64"	2-9/16"	IXF32-Y
2-36/64"		2-40/64"	2-5/8"	IXF32-Z	39.00
2-40/64"		2-44/64"	2-11/16"	IXF32-1	39.00
2-44/64"		2-48/64"	2-3/4"	IXF32-2	39.00
2-48/64"		2-52/64"	2-13/16"	IXF32-3	39.00
2-52/64"		2-56/64"	2-7/8"	IXF32-4	39.00
2-56/64"		2-60/64"	2-15/16"	IXF32-5	39.00
2-60/64"		3"	3"	IXF32-6	39.00
3"		3-4/64"	3-1/16"	IXF32-7	39.00
2 1/2"		3"	3-4/64"	3-1/16"	IXF40-1
	3-4/64"	3-8/64"	3-1/8"	IXF40-2	57.80
	3-8/64"	3-12/64"	3-3/16"	IXF40-3	57.80
	3-12/64"	3-16/64"	3-1/4"	IXF40-4	57.80
	3-16/64"	3-20/64"	3-5/16"	IXF40-5	57.80
	3-20/64"	3-24/64"	3-3/8"	IXF40-6	57.80
	3-24/64"	3-28/64"	3-7/16"	IXF40-7	57.80
	3-28/64"	3-32/64"	3-1/2"	IXF40-8	57.80

Hose ID	Hose OD		Ferrule Size	Plated Carbon Steel	
	from	to		Part #	Price/E
3"	3-32/64"	3-36/64"	3-9/16"	IXF48-T	\$73.10
	3-36/64"	3-40/64"	3-5/8"	IXF48-U	73.10
	3-40/64"	3-44/64"	3-11/16"	IXF48-V	73.10
	3-44/64"	3-48/64"	3-3/4"	IXF48-W	73.10
	3-48/64"	3-52/64"	3-13/16"	IXF48-X	73.10
	3-52/64"	3-56/64"	3-7/8"	IXF48-Y	73.10
	3-56/64"	3-60/64"	3-15/16"	IXF48-Z	73.10
	3-60/64"	4"	4"	IXF48-1	81.25
	4"	4-4/64"	4-1/16"	IXF48-2	81.25
	4-4/64"	4-8/64"	4-1/8"	IXF48-3 ¹	81.25
	4-8/64"	4-12/64"	4-3/16"	IXF48-4 ¹	81.25
	4-12/64"	4-16/64"	4-1/4"	IXF48-5 ¹	81.25
	4-36/64"	4-40/64"	4-5/8"	IXF64-T	102.00
	4-40/64"	4-44/64"	4-11/16"	IXF64-U	102.00
4"	4-44/64"	4-48/64"	4-3/4"	IXF64-V	102.00
	4-48/64"	4-52/64"	4-13/16"	IXF64-W	102.00
	4-52/64"	4-56/64"	4-7/8"	IXF64-X	102.00
	4-56/64"	4-60/64"	4-15/16"	IXF64-Y	102.00
	4-60/64"	5"	5"	IXF64-Z	104.75
	5"	5-4/64"	5-1/16"	IXF64-1	104.75
	5-4/64"	5-8/64"	5-1/8"	IXF64-2 ¹	104.75
	5-8/64"	5-12/64"	5-3/16"	IXF64-3 ¹	104.75
	5-12/64"	5-16/64"	5-1/4"	IXF64-4 ¹	104.75
	5-16/64"	5-20/64"	5-5/16"	IXF64-5 ¹	104.75
	6-40/64"	6-44/64"	6-11/16"	IXF96-1	POR
	6-44/64"	6-48/64"	6-3/4"	IXF96-2	POR
	6-46/64"	6-50/64"	6-25/32"	IXF96-3	POR
	6-48/64"	6-52/64"	6-13/16"	IXF96-4	POR
6-52/64"	6-56/64"	6-7/8"	IXF96-5	POR	
6-56/64"	6-60/64"	6-15/16"	IXF96-6	POR	
6-60/64"	7"	7"	IXF96-7	POR	
7"	7-4/64"	7-1/16"	IXF96-8	POR	
7-4/64"	7-8/64"	7-1/8"	IXF96-9	POR	
7-8/64"	7-12/64"	7-3/16"	IXF96-10	POR	
7-12/64"	7-16/64"	7-1/4"	IXF96-11	POR	
7-16/64"	7-20/64"	7-5/16"	IXF96-12	POR	
7-18/64"	7-22/64"	7-11/32"	IXF96-13	POR	
7-20/64"	7-24/64"	7-3/8"	IXF96-14	POR	

¹ For hoses using ferrule sizes IXF48-3 thru IXF48-5 and IXF64-2 thru IXF64-5, consult the factory for working pressures.

Internally Expanded Permanent Couplings - Scovill Style



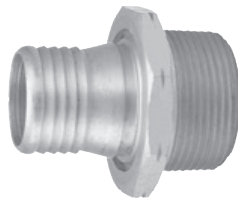
Do not interchange with other manufacturer's fittings.



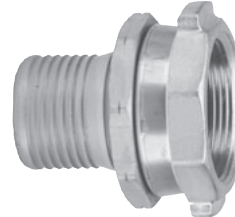
Brass internally expanded permanent coupling are recommended for discharge and suction service. Commonly used in the transfer of fuel in industry to homes, airplanes, ships, etc. The working pressure of the 520-H fitting varies with the size of the fitting, the size and construction of the hose and the media being conveyed. Consult the factory for recommendations. Dixon Holedall stems and ferrules are specifically designed to be used together as a coupling system.

Both the male and female have octagonal facets for tightening with a wrench. The female in 1½" and larger sizes has special lugs for tightening. The stem is expanded to nominal ID of hose for a rigid, uniform, full-flow area.

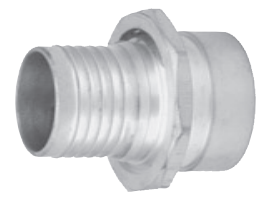
- Male and female stems are machined from bar stock or solid brass forgings; ferrules are available in brass and stainless steel.
- Couplings are compact, light and streamlined to eliminate catching on curbs and shrubs.
- The H520 fittings are designed for internal expansion only.
- Couplings are pre-lubricated for assembly.
- Hand and electrically operated installation equipment is available. Consult factory for pricing and availability.



male NPT



male NST



female NPSH

female NST

victaulic groove

Hose ID	Brass		Brass		Brass		Brass		Brass	
	Part #	Price/E	Part #	Price/E	Part #	Price/E	Part #	Price/E	Part #	Price/E
3/4"	H5192	\$23.05	---	--	H5191-BU	\$39.85	---	--	---	--
1"	H5212-A	24.20	H5212NST	\$24.60	H5211-A-BU	42.50	H5211NST	\$45.90	G5212	\$30.10
1-1/4"	H5222-A	31.85	---	--	H5221-A-BU	46.05	---	--	---	--
1-3/8"	H5272 ¹	38.85	---	--	H5271-BU ¹	73.60	---	--	---	--
1-1/2"	H5232-A	39.65	H5232NST ²	39.65	H5231-A-BU	72.65	H5231NST ²	80.75	G5232	57.50
2"	H5242	76.00	---	--	H5241-BU	128.15	---	--	G5242	80.50
2-1/2"	H5252	138.00	---	--	H5251 ³	205.30	---	--	---	--
3"	H5262	181.65	---	--	H5261 ³	268.80	---	--	---	--

¹ 1-3/8" stem has 1½" thread

² 1½" NST requires special adapter, part # H5231NSTADT

³ 2½" and 3" female parts have NPSM thread

Note: The fittings on this page are intended for fuel delivery service. See page 358 for information on API 1529 certification.



520-H Ferrules

A wide range of 520-H ferrules permits a perfect assembly of a coupling to a corresponding size of hose within commercial tolerances regardless of wall thickness. Eliminates need for large stock of coupling bodies. Consult Dixon for other hose OD's.

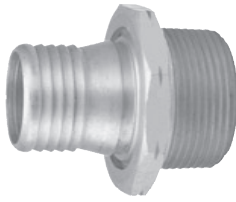


Hose ID	Hose OD		Brass		Hose ID	Hose OD		Brass		Hose ID	Hose OD		Brass	
	from	to	Part #	Price/E		from	to	Part #	Price/E		from	to	Part #	Price/E
¾"	1-8/64"	1-11/64"	R75AAS	\$7.95	1-3/8"	1-47/64"	1-50/64"	R1375BS	\$15.05	2"	2-27/64"	2-30/64"	R2AAS	\$28.85
	1-12/64"	1-14/64"	R75AS	7.95		1-51/64"	1-54/64"	R1375CS	15.05		2-31/64"	2-34/64"	R2AS	28.85
	1-15/64"	1-17/64"	R75BS	7.95		1-55/64"	1-58/64"	R1375DS	15.05		2-35/64"	2-38/64"	R2BS	28.85
	1-18/64"	1-20/64"	R75CS	7.95		1-59/64"	1-62/64"	R1375ES	15.05		2-39/64"	2-42/64"	R2CS	28.85
1"	1-24/64"	1-26/64"	R1AAAAS-A	9.00	1½"	1-54/64"	1-57/64"	R15AAAAS-A	15.90		2-43/64"	2-46/64"	R2DS	28.85
	1-27/64"	1-29/64"	R1AAS-A	9.00		1-58/64"	1-62/64"	R15AAS-A	15.90		2-47/64"	2-50/64"	R2ES	28.85
	1-30/64"	1-32/64"	R1AS-A	9.00		1-63/64"	2-2/64"	R15AS-A	15.90		2-51/64"	2-54/64"	R2FS	28.85
	1-33/64"	1-35/64"	R1BS-A	9.00		2-3/64"	2-6/64"	R15BS-A	15.90		2-62/64"	3-1/64"	R25AS	43.05
	1-36/64"	1-38/64"	R1CS-A	9.00		2-7/64"	2-11/64"	R15CS-A	15.90		3-2/64"	3-6/64"	R25BS	43.05
	1-39/64"	1-41/64"	R1DS-A	9.00		2-12/64"	2-14/64"	R15DS-A	15.90		3-7/64"	3-11/64"	R25CS	43.05
	1-42/64"	1-44/64"	R1ES-A	9.00		2-15/64"	2-19/64"	R15ES-A	15.90		3-12/64"	3-16/64"	R25DS	43.05
	1-39/64"	1-42/64"	R125AAS-A	12.95		2-20/64"	2-24/64"	R15FS	15.90		3-17/64"	3-21/64"	R25ES	43.05
1¼"	1-43/64"	1-46/64"	R125AS-A	12.95	2-25/64"	2-28/64"	R15GS	15.90	3-22/64"	3-26/64"	R25FS	43.05		
	1-47/64"	1-50/64"	R125BS-A	12.95	3"	3-30/64"	3-34/64"	R3AAAS	57.55	3-30/64"	3-34/64"	R3AAS	57.55	
	1-51/64"	1-54/64"	R125CS-A	12.95		3-35/64"	3-39/64"	R3AS	57.55	3-40/64"	3-45/64"	R3BS	57.55	
	1-55/64"	1-58/64"	R125DS-A	12.95		3-46/64"	3-50/64"	R3BS	57.55	3-51/64"	3-54/64"	R3CS	57.55	
	1-59/64"	1-62/64"	R125ES	12.95										

¹ 1", 1¼" and 1½" ferrules will be replaced by API ferrules on page 358 as inventory is depleted.

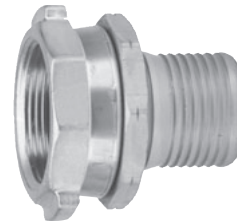
API Certified Permanently Attached Petroleum Couplings

The following fittings have been tested and are compliant with API 1529 6th edition. Coupling procedures, ferrule recommendations and API test data are available upon request, please contact the factory.



520-H series male thread

Hose Size	Thread Type	Brass		Aluminum	
		Part #	Price/E	Part #	Price/E
1"	NPT	H5212-A	\$24.20	---	--
1¼"	NPT	H5222-A	31.85	---	--
1½"	NPT	H5232-A	39.65	---	--
2"	NPT	H5242L-A	76.00	A5242L-A ¹	\$63.00
2½"	NPT	H5252L-A	138.00	A5252L-A ¹	110.00
3"	NPT	H5262L-A	181.65	A5262L-A ¹	130.00
4"	NPT	H5282L-A	320.00	---	--



520-H series female thread

Hose Size	Thread Type	Brass	
		Part #	Price/E
1"	NPSH	H5211-A-BU	\$42.50
1¼"	NPSH	H5221-A-BU	46.05
1½"	NPSH	H5231-A-BU	72.65
2"	NPSH	H5241L-A-BU	128.15
2½"	NPSM	H5251L-A-BU	205.30
3"	NPSM	H5261L-A-BU	268.80
4"	NPSM	H5281L-A-BU	395.00

¹ requires a special thrust plate

2" **25000HTL24**

2½" **25000HTL25**

3" **25000HTL26**

API 520-H Series Ferrules



Hose ID	Hose OD		Brass	
	from	to	Part #	Price/E
1"	1-24/64"	1-26/64"	R1AAAS-A	\$9.00
	1-27/64"	1-29/64"	R1AAS-A	9.00
	1-30/64"	1-32/64"	R1AS-A	9.00
	1-33/64"	1-35/64"	R1BS-A	9.00
	1-36/64"	1-38/64"	R1CS-A	9.00
	1-39/64"	1-41/64"	R1DS-A	9.00
	1-42/64"	1-44/64"	R1ES-A	9.00
1¼"	1-39/64"	1-42/64"	R125AAS-A	12.95
	1-43/64"	1-46/64"	R125AS-A	12.95
	1-47/64"	1-50/64"	R125BS-A	12.95
	1-51/64"	1-54/64"	R125CS-A	12.95
	1-55/64"	1-58/64"	R125DS-A	12.95
	1-59/64"	1-62/64"	R125ES-A	12.95
1½"	1-54/64"	1-57/64"	R15AAAS-A	15.90
	1-58/64"	1-62/64"	R15AAS-A	15.90
	1-63/64"	2-2/64"	R15AS-A	15.90
	2-3/64"	2-6/64"	R15BS-A	15.90
	2-7/64"	2-11/64"	R15CS-A	15.90
	2-12/64"	2-14/64"	R15DS-A	15.90
	2-15/64"	2-19/64"	R15ES-A	15.90

Hose ID	Hose OD		304 Stainless Steel		Aluminum	
	from	to	Part #	Price/E	Part #	Price/E
2"	2-31/64"	2-34/64"	R2ASS-A	\$26.00	R2AAL-A	\$22.00
	2-35/64"	2-38/64"	R2BSS-A	26.00	R2BAL-A	22.00
	2-39/64"	2-42/64"	R2CSS-A	26.00	R2CAL-A	22.00
	2-43/64"	2-46/64"	R2DSS-A	26.00	R2DAL-A	22.00
	2-47/64"	2-50/64"	R2ESS-A	26.00	R2EAL-A	22.00
2½"	2-62/64"	3-1/64"	R25ASS-A	40.20	R25AAL-A	33.00
	3-2/64"	3-6/64"	R25BSS-A	40.20	R25BAL-A	33.00
	3-7/64"	3-11/64"	R25CSS-A	40.20	R25CAL-A	33.00
	3-12/64"	3-16/64"	R25DSS-A	40.20	R25DAL-A	33.00
3"	3-17/64"	3-21/64"	R25ESS-A	40.20	R25EAL-A	33.00
	3-35/64"	3-39/64"	R3AASS-A	51.25	R3AAAL-A	42.40
	3-40/64"	3-45/64"	R3ASS-A	51.25	R3AAL-A	42.40
	3-46/64"	3-50/64"	R3BSS-A	51.25	R3BAL-A	42.40
	3-51/64"	3-54/64"	R3CSS-A	51.25	R3CAL-A	42.40
	3-55/64"	3-59/64"	R3DSS-A	51.25	R3DAL-A	42.40
	4-46/64"	4-48/64"	R4ESS-A	144.50	---	--
	4-49/64"	4-51/64"	R4FSS-A	144.50	---	--
	4-52/64"	4-54/64"	R4GSS-A	144.50	---	--
	4-55/64"	4-57/64"	R4HSS-A	144.50	---	--
4-58/64"	4-59/64"	R4KSS-A	144.50	---	--	
4"	4-60/64"	4-62/64"	R4LSS-A	144.50	---	--
	4-63/64"	5"	R4MSS-A	144.50	---	--