

316 Stainless Steel Inserts

- brass inserts are available on page 284
- stainless steel ferrules are available on page 291

| Hose Size | NPT Size | Part # | Price/E | Hose Size | NPT Size | Part # | Price/E |
|-----------|----------|--------------|----------------|-----------|----------|------------------|----------------|
| 1/8" | 1/8" | RN11 | \$14.00 | 1/2" | 1/4" | RN42 | \$15.50 |
| 3/16" | 1/8" | RN151 | 16.20 | 1/2" | 3/8" | RN43 | 22.15 |
| 3/16" | 1/4" | RN152 | 16.20 | 1/2" | 1/2" | RN44 | 28.95 |
| 1/4" | 1/8" | RN21 | 13.20 | 1/2" | 3/4" | RN46 | 41.90 |
| 1/4" | 1/4" | RN22 | 11.60 | 5/8" | 3/8" | RN53 | 34.40 |
| 1/4" | 3/8" | RN23 | 21.85 | 5/8" | 1/2" | RN54 | 34.40 |
| 5/16" | 1/8" | RN251 | 14.50 | 5/8" | 3/4" | RN56 | 36.15 |
| 5/16" | 1/4" | RN252 | 16.90 | 3/4" | 1/2" | RN64 | 40.95 |
| 5/16" | 3/8" | RN253 | 15.50 | 3/4" | 3/4" | RN66 | 55.45 |
| 3/8" | 1/8" | RN31 | 12.15 | 1" | 3/4" | RN86 | 60.20 |
| 3/8" | 1/4" | RN32 | 11.80 | 1" | 1" | RKHN881 * | 75.00 |
| 3/8" | 3/8" | RN33 | 14.50 | | | | |
| 3/8" | 1/2" | RN34 | 29.55 | | | | |

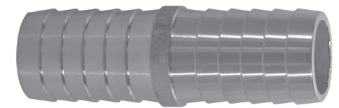


* same shank style as KHN881 shown on page 255

Shank

Dixon 316 Stainless Steel Hose Menders

| Size | Length | Part # | Price/E | Size | Length | Part # | Price/E |
|------|---------|------------|----------------|------|---------|------------|----------------|
| 1/4" | 2-1/32" | RM2 | \$14.45 | 1/2" | 2-1/16" | RM4 | \$22.75 |
| 3/8" | 2-1/16" | RM3 | 15.40 | 3/4" | 2-1/2" | RM6 | 30.50 |



316 Stainless Short Shank Couplings



Complete Coupling



Female with Nut
NPSM Thread



Male
NPT Thread

| Size | 316 Stainless Steel | | 316 Stainless Steel | | 316 Stainless Steel | | Opt Qty |
|--------|---------------------|----------------|---------------------|----------------|---------------------|----------------|---------|
| | Complete Part # | Price/E | Female Part # | Price/E | Male Part # | Price/E | |
| 1/2" | RES404 | \$92.70 | RES444 | \$71.95 | RST1 * | \$20.75 | 50 |
| 3/4" | RES606 | 60.75 | RES646 | 40.00 | RST5 * | 20.75 | 50 |
| 1" | RES808 | 61.70 | RES848 | 40.85 | RST10 | 20.85 | 50 |
| 1-1/4" | RES48 | 160.00 | RES33 | 133.95 | RST15 | 26.05 | 50 |
| 1-1/2" | RES63 | 127.75 | RES43 | 96.10 | RST20 | 31.65 | 50 |
| 2" | RES78 | 164.40 | RES53 | 120.70 | RST25 | 43.70 | 25 |

Standard gasket is rubber (KRW); for Viton® gaskets (KVW) see page 246.

* made from casting

316 Stainless Steel Pipe Nipples

Close Nipples



schedule 40 welded pipe
male NPT x male NPT

| NPT Size | Overall Length | Part # | Price/E | Opt Qty |
|----------|----------------|----------------|---------------|---------|
| 1/8" | 3/4" | CN012SS | \$4.05 | -- |
| 1/4" | 7/8" | CN025SS | 4.55 | -- |
| 3/8" | 1" | CN037SS | 5.60 | -- |
| 1/2" | 1-1/8" | CN050SS | 7.50 | -- |
| 3/4" | 1-3/8" | CN075SS | 9.70 | 10 |
| 1" | 1-1/2" | CN100SS | 13.45 | 10 |
| 1-1/2" | 1-3/4" | CN150SS | 22.75 | 10 |
| 2" | 2" | CN200SS | 35.30 | -- |
| 3" | 2-5/8" | CN300SS | 95.00 | -- |
| 4" | 2-7/8" | CN400SS | 128.30 | -- |

- reference page 279 for brass nipples
- reference pages 216 and 511 for carbon steel and galvanized nipples

Threaded Both End Nipples



schedule 40 welded pipe
male NPT x male NPT

| NPT Size | Overall Length | Part # | Price/E |
|----------|----------------|------------------|----------------|
| 1/4" | 6" | TN025X6SS | \$15.25 |
| 1/2" | 6" | TN050X6SS | 30.00 |
| 3/4" | 6" | TN075X6SS | 33.80 |
| 1" | 6" | TN100X6SS | 45.65 |
| 1-1/2" | 6" | TN150X6SS | 69.00 |
| 2" | 6" | TN200X6SS | 90.50 |
| 3" | 6" | TN300X6SS | 183.80 |
| 4" | 6" | TN400X6SS | 245.90 |

- reference page 279 for brass nipples
- reference page 512 for carbon steel and stainless nipples