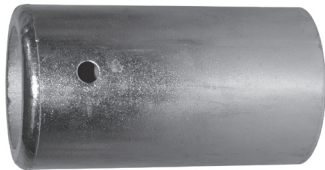


External Swage High Pressure Couplings

These couplings are for services requiring a fitting which will withstand extremely high pressures (up to **3,000 PSI**) and severe operating conditions, such as on small and medium size drilling rigs, used for slim hole, core drill, workover, seismograph, water well, blast or shot holes, etc. These long, rugged fittings are machined from seamless pipe and tubing with specially designed serrations. The mating ferrules are machined from heavy wall material incorporating matching serrations. These couplings are shipped with matching ferrules. Please provide hose OD when ordering for properly sized ferrule. Make sure both ends of the hose are measured for OD. Must be swaged with 50 Ton or 100 Ton Ram.

- An accurate hose OD must be provided to complete the part # and to ensure proper retention.
- The LM fittings are sold as a complete coupling, including stem and ferrule.
- API and NPT sizes are interchangeable

Stem and Ferrule Complete Assemblies



NPT Male Threaded Couplings

Hose ID	NPT Size	Zinc Plated Steel	
		Part #	Price/E
2"	2"	LM32-*	\$322.00
2½"	2½"	LM40-*	374.00
3"	3"	LM48-*	422.00

API Male Threaded Couplings

Hose ID	API Size	Zinc Plated Steel	
		Part #	Price/E
2"	2½"	LM3240-*	POR
2½"	3"	LM4048-*	POR
3"	4"	LM4864-*	POR

Holedall Internal Expansion Couplings

The Dixon Internally Expanded Couplings are essential when maximum flow is important. Only one expansion tool is needed for each hose ID. Some recommended applications of these fittings are: concrete pump hose, plaster and grout hose, oil suction and discharge hose, multi-purpose heavy duty air hose, jetting hose, barge loading hose and bottom loading hose.

Benefits of Internal Expansion Fittings:

- maximum flow of media
- reduction of turbulence through hose
- excellent sealing and retention characteristics
- outperforms band clamps
- easy and consistent installation

End Configurations Available:

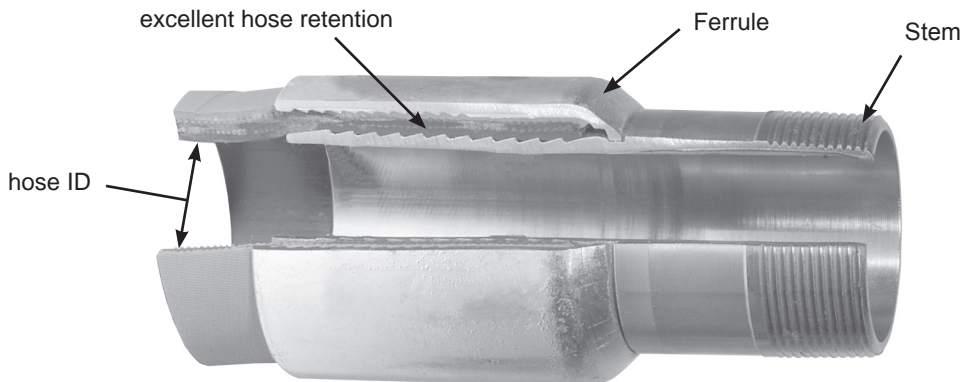
- male NPT
- raised California
- victaulic
- others available on request

Dixon Holedall stems and ferrules are specifically designed to be used together as a coupling system.

SAFETY
ALERT

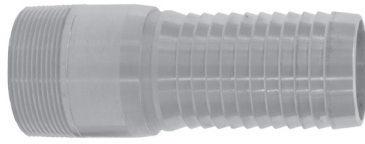
Due to differences in dimensions and tolerances, for safety reasons, do not use other manufacturer's stems or ferrules with Dixon Holedall products.

SAFETY
ALERT

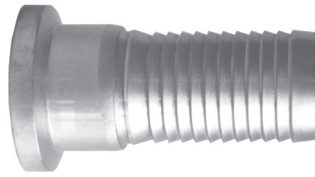


Cross-section of Holedall internally expanded assembly

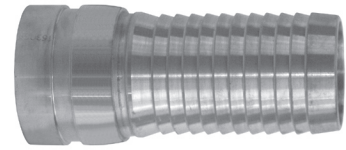
Internal Expansion Stems



male pipe end



heavy duty raised end



grooved end

Size	Carbon Steel	
	Part #	Price/E
1"	IXM16	\$52.80
1¼"	IXM20	57.10
1½"	IXM24	46.90
2"	IXM32	52.00
2½"	IXM40	72.10
3"	IXM48	94.40
4"	IXM64	127.25
6"	IXM96	165.00 <small>NEW</small>

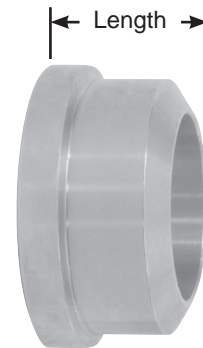
Size	Carbon Steel	
	Part #	Price/E
1½"	IXH24	\$90.00
2"	IXH32	92.00
2½"	IXH40	122.00
3"	IXH48	148.65
4"	IXH64	210.00

Size	Carbon Steel	
	Part #	Price/E
1¼"	IXV20	\$52.20
1½"	IXV24	51.50
2"	IXV32	52.00
2½"	IXV40	73.00
3"	IXV48	104.50
4"	IXV64	150.00

Butt Weld x Heavy Duty Raised End (California Style)

Beveled design for welding to Schedule 40 pipe allows connection to a heavy duty raised end (California style) hose fitting or similar style end.

Size	Length	Carbon Steel	
		Part #	Price/E
1½"	1½"	HDE24	\$41.10
2"	1½"	HDE32	41.50
2½"	1½"	HDE40	51.70
3"	1½"	HDE48	54.90
4"	1½"	HDE64	66.25
5"	1½"	HDE80	82.00 <small>NEW</small>



Clamps for IXH Raised End (California Style) Stems

Drop-forged steel clamps for fast assembly when connecting heavy-duty raised end fittings used for concrete. These clamps can be used to connect the ends of pipes or hoses which use the Raised End or California style fittings listed above. Shipped with double lipped gasket and safety pin. 1½" through 3" are galvanized; 4" and 5" are painted green. Clamp should only be used with safety pin in place.

Hose ID	Forged Steel Clamps		Buna-N Gaskets	
	Part #	Price/E	Part #	Price/E
1½"	IXHC150	\$127.70	IXHCG150	\$14.35
2"	IXHC200	129.60	IXHCG200	14.35
2½"	IXHC250	142.50	IXHCG250	14.35
3"	IXHC300	159.00	IXHCG300	17.90
4"	IXHC400	204.25	IXHCG400	17.90
5"	IXHC500 <small>NEW</small>	221.00	IXHCG500 <small>NEW</small>	20.75



Internal Expansion Ferrules



Hose ID	Hose OD		Ferrule Size	Plated Carbon Steel	
	from	to		Part #	Price/E
1"	1-24/64"	1-28/64"	1-7/16"	IXF16-1	\$37.50
	1-28/64"	1-32/64"	1-1/2"	IXF16-2	37.50
	1-32/64"	1-36/64"	1-9/16"	IXF16-3	37.50
1 1/4"	1-40/64"	1-44/64"	1-11/16"	IXF20-Z	37.15
	1-44/64"	1-48/64"	1-3/4"	IXF20-1	37.15
	1-48/64"	1-52/64"	1-13/16"	IXF20-2	37.15
	1-52/64"	1-56/64"	1-7/8"	IXF20-3	37.15
	1-56/64"	1-60/64"	1-15/16"	IXF20-4	37.15
	1-60/64"	2"	2"	IXF20-5	37.15
1 1/2"	2"	2-4/64"	2-1/16"	IXF20-6	37.15
	1-56/64"	1-60/64"	1-15/16"	IXF24-Z	35.85
	1-60/64"	2"	2"	IXF24-1	35.85
	2"	2-4/64"	2-1/16"	IXF24-2	35.85
	2-4/64"	2-8/64"	2-1/8"	IXF24-3	35.85
	2-8/64"	2-12/64"	2-3/16"	IXF24-4	35.85
	2-12/64"	2-16/64"	2-1/4"	IXF24-5	35.85
	2-16/64"	2-20/64"	2-5/16"	IXF24-6	35.85
	2-20/64"	2-24/64"	2-3/8"	IXF24-7	35.85
	2"	2-32/64"	2-36/64"	2-9/16"	IXF32-Y
2-36/64"		2-40/64"	2-5/8"	IXF32-Z	39.00
2-40/64"		2-44/64"	2-11/16"	IXF32-1	39.00
2-44/64"		2-48/64"	2-3/4"	IXF32-2	39.00
2-48/64"		2-52/64"	2-13/16"	IXF32-3	39.00
2-52/64"		2-56/64"	2-7/8"	IXF32-4	39.00
2-56/64"		2-60/64"	2-15/16"	IXF32-5	39.00
2-60/64"		3"	3"	IXF32-6	39.00
3"		3-4/64"	3-1/16"	IXF32-7	39.00
2 1/2"		3"	3-4/64"	3-1/16"	IXF40-1
	3-4/64"	3-8/64"	3-1/8"	IXF40-2	57.80
	3-8/64"	3-12/64"	3-3/16"	IXF40-3	57.80
	3-12/64"	3-16/64"	3-1/4"	IXF40-4	57.80
	3-16/64"	3-20/64"	3-5/16"	IXF40-5	57.80
	3-20/64"	3-24/64"	3-3/8"	IXF40-6	57.80
	3-24/64"	3-28/64"	3-7/16"	IXF40-7	57.80
	3-28/64"	3-32/64"	3-1/2"	IXF40-8	57.80

Hose ID	Hose OD		Ferrule Size	Plated Carbon Steel	
	from	to		Part #	Price/E
3"	3-32/64"	3-36/64"	3-9/16"	IXF48-T	\$73.10
	3-36/64"	3-40/64"	3-5/8"	IXF48-U	73.10
	3-40/64"	3-44/64"	3-11/16"	IXF48-V	73.10
	3-44/64"	3-48/64"	3-3/4"	IXF48-W	73.10
	3-48/64"	3-52/64"	3-13/16"	IXF48-X	73.10
	3-52/64"	3-56/64"	3-7/8"	IXF48-Y	73.10
	3-56/64"	3-60/64"	3-15/16"	IXF48-Z	73.10
	3-60/64"	4"	4"	IXF48-1	81.25
	4"	4-4/64"	4-1/16"	IXF48-2	81.25
	4-4/64"	4-8/64"	4-1/8"	IXF48-3 ¹	81.25
	4-8/64"	4-12/64"	4-3/16"	IXF48-4 ¹	81.25
	4-12/64"	4-16/64"	4-1/4"	IXF48-5 ¹	81.25
	4-36/64"	4-40/64"	4-5/8"	IXF64-T	102.00
	4-40/64"	4-44/64"	4-11/16"	IXF64-U	102.00
4"	4-44/64"	4-48/64"	4-3/4"	IXF64-V	102.00
	4-48/64"	4-52/64"	4-13/16"	IXF64-W	102.00
	4-52/64"	4-56/64"	4-7/8"	IXF64-X	102.00
	4-56/64"	4-60/64"	4-15/16"	IXF64-Y	102.00
	4-60/64"	5"	5"	IXF64-Z	104.75
	5"	5-4/64"	5-1/16"	IXF64-1	104.75
	5-4/64"	5-8/64"	5-1/8"	IXF64-2 ¹	104.75
	5-8/64"	5-12/64"	5-3/16"	IXF64-3 ¹	104.75
	5-12/64"	5-16/64"	5-1/4"	IXF64-4 ¹	104.75
	5-16/64"	5-20/64"	5-5/16"	IXF64-5 ¹	104.75
	6-40/64"	6-44/64"	6-11/16"	IXF96-1	POR
	6-44/64"	6-48/64"	6-3/4"	IXF96-2	POR
	6-46/64"	6-50/64"	6-25/32"	IXF96-3	POR
	6-48/64"	6-52/64"	6-13/16"	IXF96-4	POR
6-52/64"	6-56/64"	6-7/8"	IXF96-5	POR	
6-56/64"	6-60/64"	6-15/16"	IXF96-6	POR	
6-60/64"	7"	7"	IXF96-7	POR	
7"	7-4/64"	7-1/16"	IXF96-8	POR	
7-4/64"	7-8/64"	7-1/8"	IXF96-9	POR	
7-8/64"	7-12/64"	7-3/16"	IXF96-10	POR	
7-12/64"	7-16/64"	7-1/4"	IXF96-11	POR	
7-16/64"	7-20/64"	7-5/16"	IXF96-12	POR	
7-18/64"	7-22/64"	7-11/32"	IXF96-13	POR	
7-20/64"	7-24/64"	7-3/8"	IXF96-14	POR	

¹ For hoses using ferrule sizes IXF48-3 thru IXF48-5 and IXF64-2 thru IXF64-5, consult the factory for working pressures.