

Boss Male Stems



steel barstock



iron



316 stainless



brass

Hose x NPT Size	Steel Bar Stock		Opt Qty	Size	Iron		Opt Qty	Size	316 Stainless		Size	Brass	
	Part #	Price/E			Part #	Price/E			Part #	Price/E		Part #	Price/E
1/4" x 1/8"	MS4X2	\$8.30	25	---	---	---	---	1/2"	RMS1	\$60.50	---	---	---
1/4" x 1/4"	MSA	6.50	50	---	---	---	---	3/4"	RMS6	60.65	3/4"	BMS6	\$30.30
1/4" x 3/8"	MSB	7.65	25	---	---	---	---	1"	RMS11	61.30	1"	BMS11	47.20
3/8" x 1/4"	MS6X4	7.25	25	1 1/4"	MS16	\$21.90	20	1 1/4"	RMS16	118.45	1 1/4"	BMS16	64.00
3/8" x 3/8"	MSC	5.80	100	1 1/2"	MS21	23.85	20	1 1/2"	RMS21	119.50	1 1/2"	BMS21	78.80
3/8" x 1/2"	MS6X8	10.25	25	2"	MS26	35.00	10	2"	RMS26	124.65	2"	BMS26	122.70
1/2" x 1/4"	MS8X4	7.25	25	2 1/2"	MS31	62.75	5	2 1/2"	RMS31	242.00	---	---	---
1/2" x 3/8"	MS8X6	7.40	50	3"	MS36	85.20	5	3"	RLP36 ¹	215.00	3"	BMS36	288.90
1/2" x 1/2"	MS1	6.20	25	4"	MS46	148.55	2	4"	RLP46 ¹	364.00	---	---	---
1/2" x 3/4"	MS8X12	15.65	25	---	---	---	---	---	---	---	---	---	---
3/4" x 1/2"	MS12X8	13.50	25	---	---	---	---	---	---	---	---	---	---
3/4" x 3/4"	MS6	9.60	25	---	---	---	---	---	---	---	---	---	---
3/4" x 1"	MS12X16	20.55	25	---	---	---	---	---	---	---	---	---	---
1" x 3/4"	MS16X12	21.00	25	---	---	---	---	---	---	---	---	---	---
1" x 1"	MS11	14.30	25	---	---	---	---	---	---	---	---	---	---

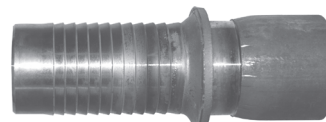
¹ tubular steel

• Use with Boss clamps on pages 93 and 94. For safety tags and safety tape see page 540.

LP-Boss Male Stems



male NPT end



beveled end

Size	Plated Steel		316 Stainless		Plated Carbon Steel		Unplated Steel	
	NPT Part #	Price/E	NPT Part #	Price/E	NPT Part #	Price/E	Beveled Part #	Price/E
1 1/4"	LP16	\$60.50	---	---	LP16-80 ²	\$64.80	---	---
1 1/2"	LP21	57.45	---	---	LP21-80 ²	65.45	---	---
2"	LP26	49.40	---	---	LP26-80 ²	68.40	LPB26	\$58.25
2 1/2"	LP31	121.00	---	---	---	---	---	---
3"	LP36	121.30	RLP36 ¹	\$215.00	---	---	LPB36	115.00
4"	LP46	159.00	RLP46 ¹	364.00	---	---	---	---
6"	LP66	339.00	---	---	---	---	---	---

¹ tubular steel² schedule 80 stems meet NFPA 58

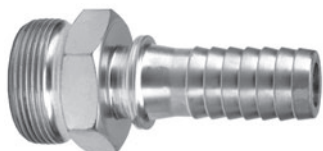
Boss Hose Menders

- collars engage grip fingers of Boss clamps
- 3/4" - 3" plated iron; 1/2" plated steel



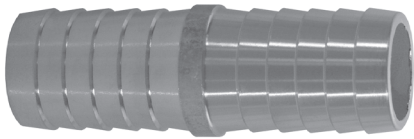
Size	Part #	Price/E	Size	Part #	Price/E
1/2"	M1	\$9.30	1 1/2"	M21	\$19.75
3/4"	M6	17.25	2"	M26	33.25
1"	M11	27.40	2 1/2"	M31	57.35
1 1/4"	M16	19.75	3"	M36	67.35

Boss Spud x Hose



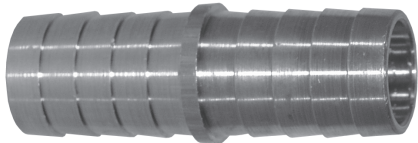
Size	Polymer Seat	
	Part #	Price/E
1"	GH1311	\$35.50
2"	GH2826	76.15

Dixon 316 Stainless Steel Menders



Size	Length	Stainless Steel	
		Part #	Price/E
1/4"	2-1/32"	RM2	\$14.45
3/8"	2-1/16"	RM3	15.40
1/2"	2-1/16"	RM4	22.75
3/4"	2-1/2"	RM6	30.50

Dixon Brass Hose Menders



Size	Brass	
	Part #	Price/E
1/8"	BM1	\$1.60
3/16"	BM15	1.50
1/4"	BM2	1.60
5/16"	BM25	1.65
3/8"	BM3	1.90
1/2"	BM4	2.60
5/8"	BM5	3.35
3/4"	BM6	4.25
1"	BM8	7.40

Tuff-Lite Nylon Menders

- maximum working temperature **150°F**



1/4" - 2" menders



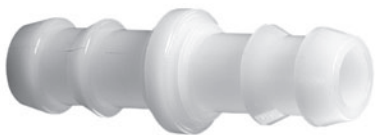
3" - 6" menders

Size	Nylon		Pkg Qty
	Part #	Price/E	
1/4"	TM2 *	\$.63	50
5/16"	TM25 *	.68	50
3/8"	TM3 *	.72	50
1/2"	TM4 *	.96	50
5/8"	TM5 *	1.48	50
3/4"	TM6 *	1.48	50
1"	TM8 *	1.82	25
1-1/4"	TM16	4.55	50
1-1/2"	TM21	7.45	100
2"	TM26	9.55	50
3"	TM36	32.00	--
4"	TM46	54.10	--
6"	TM66	81.65	--

- * TM2 through TM8 sold in package quantity only.

Tuff-Lite Nylon Push-On Menders

- no clamps needed when used with push-on hose
- sold in package quantity only



Size	Nylon		Pkg Qty
	Part #	Price/E	
1/4"	TPM2	\$.65	50
3/8"	TPM3	.71	50
1/2"	TPM4	.87	50

Dixon Steel Hose Menders

- They are not for compressible products such as **air, nitrogen or steam.** SAFETY
ALERT
- The working pressure may vary with the construction of the hose, the type of clamping system used and the application. Consult the factory for recommendations.
- In accordance with the R.M.A. bulletin for oil suction and discharge hose, a coupled length of hose in any size,

should be tested to 1½ times the working pressure and held for fifteen minutes without leaking or coupling movement. For additional information and detailed instruction on testing procedures, see the Rubber Manufacturers Association (R.M.A.) handbook.



Size	Zinc Plated Steel		Opt Qty
	Part #	Price/E	
1/4"	DMA	\$7.10	200
3/8"	DMB	7.15	100
1/2"	DM1	6.90	50
5/8"	DM5	7.10	50
3/4"	DM6	6.25	50
1"	DM11	5.70	50
1-1/4"	DM16	7.90	50
1-3/8"	DM18	24.80	50
1-1/2"	DM21	8.00	50
1-1/2"	DMXL21 *	23.00	25
2"	DM26	10.40	50
2"	DMXL26 *	27.40	25
2-1/2"	DM31	17.10	25
3"	DM36	20.90	20
4"	DM46	37.00	10
5"	DM51	123.10	5
6"	DM66	93.00	4
8"	DM86	195.00	1
10"	DM100	309.50	1
12"	DM120	490.45	1

Size	Stainless Steel		Opt Qty
	Part #	Price/E	
1/4"	RDMA	\$26.70	100
3/8"	RDMB	31.05	100
1/2"	RDM1	26.80	50
3/4"	RDM6	54.65	50
1"	RDM11	58.00	50
1-1/4"	RDM16	60.95	5
1-1/2"	RDM21	70.30	50
2"	RDM26	78.00	10
3"	RDM36	175.25	5
4"	RDM46	207.90	5

* XL series is extra long

King Steel Hose Menders

- They are not for compressible products such as **air, nitrogen or steam.** SAFETY
ALERT
- The working pressure may vary with the construction of the hose, the type of clamping system used and the application. Consult the factory for recommendations.

- In accordance with the R.M.A. bulletin for oil suction and discharge hose, a coupled length of hose in any size, should be tested to 1½ times the working pressure and held for fifteen minutes without leaking or coupling movement. For additional information and detailed instruction on testing procedures, see the Rubber Manufacturers Association (R.M.A.) handbook.

Size	for 1 clamp each end		for 2 clamps each end	
	Part #	Price/E	Part #	Price/E
1/4"	KM21	\$5.00	---	---
5/16"	KM251	5.00	---	---
1/2"	KM41	8.15	KM42	\$10.20
5/8"	KM51	9.10	KM52	11.15
3/4"	KM61	6.60	KM62	10.00
1"	KM81	7.25	KM82	11.00
1-1/4"	KM101	7.25	KM102	12.10
1-1/2"	KM121	10.50	KM122	18.00
2"	---	---	KM162	25.00



for 1 clamp each end



for 2 clamps each end

Strainer with Spring Loaded Check Valves

- brass with NBR seat, stainless steel strainer
- soft seat for bubble tight shutoff, spring loaded for fast seating action

- flow profile designed to minimize head loss
- temperature range: **10°F to 210°F** (-10°C to 100°C)
- cracking pressure: **0.50 PSI**
- pressure rating: 1½" - 2" **400 PSI WOG**, 3" - 4" **175 PSI WOG**

Size	Part #	Price/E
1½"	BVFS20 *	\$78.65
2"	BVFS25 *	123.75
3"	BVFS35	333.05
4"	BVFS40	502.30



* NSF61 approved

316 Stainless Steel Inserts

- brass inserts are available on page 284
- stainless steel ferrules are available on page 291

Hose Size	NPT Size	Part #	Price/E	Hose Size	NPT Size	Part #	Price/E
1/8"	1/8"	RN11	\$14.00	1/2"	1/4"	RN42	\$15.50
3/16"	1/8"	RN151	16.20	1/2"	3/8"	RN43	22.15
3/16"	1/4"	RN152	16.20	1/2"	1/2"	RN44	28.95
1/4"	1/8"	RN21	13.20	1/2"	3/4"	RN46	41.90
1/4"	1/4"	RN22	11.60	5/8"	3/8"	RN53	34.40
1/4"	3/8"	RN23	21.85	5/8"	1/2"	RN54	34.40
5/16"	1/8"	RN251	14.50	5/8"	3/4"	RN56	36.15
5/16"	1/4"	RN252	16.90	3/4"	1/2"	RN64	40.95
5/16"	3/8"	RN253	15.50	3/4"	3/4"	RN66	55.45
3/8"	1/8"	RN31	12.15	1"	3/4"	RN86	60.20
3/8"	1/4"	RN32	11.80	1"	1"	RKHN881 *	75.00
3/8"	3/8"	RN33	14.50				
3/8"	1/2"	RN34	29.55				

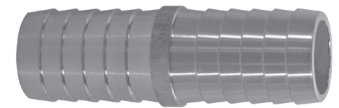


* same shank style as KHN881 shown on page 255

Shank

Dixon 316 Stainless Steel Hose Menders

Size	Length	Part #	Price/E	Size	Length	Part #	Price/E
1/4"	2-1/32"	RM2	\$14.45	1/2"	2-1/16"	RM4	\$22.75
3/8"	2-1/16"	RM3	15.40	3/4"	2-1/2"	RM6	30.50



316 Stainless Short Shank Couplings



Complete Coupling



Female with Nut
NPSM Thread



Male
NPT Thread

Size	316 Stainless Steel		316 Stainless Steel		316 Stainless Steel		Opt Qty
	Complete Part #	Price/E	Female Part #	Price/E	Male Part #	Price/E	
1/2"	RES404	\$92.70	RES444	\$71.95	RST1 *	\$20.75	50
3/4"	RES606	60.75	RES646	40.00	RST5 *	20.75	50
1"	RES808	61.70	RES848	40.85	RST10	20.85	50
1-1/4"	RES48	160.00	RES33	133.95	RST15	26.05	50
1-1/2"	RES63	127.75	RES43	96.10	RST20	31.65	50
2"	RES78	164.40	RES53	120.70	RST25	43.70	25

Standard gasket is rubber (KRW); for Viton® gaskets (KVW) see page 246.

* made from casting

316 Stainless Steel Pipe Nipples

Close Nipples



schedule 40 welded pipe
male NPT x male NPT

SAFETY ALERT Do not use pipe nipples as hose inserts.

Threaded Both End Nipples



schedule 40 welded pipe
male NPT x male NPT

NPT Size	Overall Length	Part #	Price/E	Opt Qty
1/8"	3/4"	CN012SS	\$4.05	--
1/4"	7/8"	CN025SS	4.55	--
3/8"	1"	CN037SS	5.60	--
1/2"	1-1/8"	CN050SS	7.50	--
3/4"	1-3/8"	CN075SS	9.70	10
1"	1-1/2"	CN100SS	13.45	10
1-1/2"	1-3/4"	CN150SS	22.75	10
2"	2"	CN200SS	35.30	--
3"	2-5/8"	CN300SS	95.00	--
4"	2-7/8"	CN400SS	128.30	--

NPT Size	Overall Length	Part #	Price/E
1/4"	6"	TN025X6SS	\$15.25
1/2"	6"	TN050X6SS	30.00
3/4"	6"	TN075X6SS	33.80
1"	6"	TN100X6SS	45.65
1-1/2"	6"	TN150X6SS	69.00
2"	6"	TN200X6SS	90.50
3"	6"	TN300X6SS	183.80
4"	6"	TN400X6SS	245.90

- reference page 279 for brass nipples
- reference pages 216 and 511 for carbon steel and galvanized nipples

- reference page 279 for brass nipples
- reference page 512 for carbon steel and stainless nipples

GHT Zinc Hose Fittings

- premium brass and zinc construction for maximum strength and durability
- patented impact resistant clamp design
- non-corroding high grade 410 stainless steel screws will not strip when tightened
- manufactured using the highest level of quality control
- leakproof, reusable
- for rubber or plastic hose
- fits all 5/8" and 3/4" hose



Female



Male



Mender

Size	Opt Qty	Female Part #	Price/E	Male Part #	Price/E	Mender Part #	Price/E
5/8"	48	M5834F	\$12.30	M5834M	\$11.00	M5834HM	\$17.00
3/4"	48	M5834F	12.30	M5834M	11.00	M5834HM	17.00



GHT Brass Clincher Repair Fittings



Female with Swivel Nut



Male

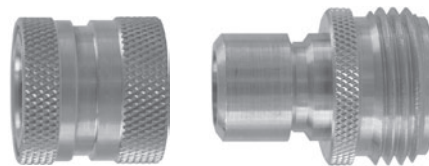


Mender

Size	Opt Qty	Female Part #	Price/E	Male Part #	Price/E	Mender Part #	Price/E
1/2"	10	C12F	\$6.50	C12M	\$5.90	C12HM	\$6.50
5/8"	10	C58F	6.50	C58M	5.90	C58HM	6.50
3/4"	10	C34F	6.50	C34M	5.90	C34HM	6.50

Brass Garden Hose Quick Couplers

Precision machined from solid brass with easy push-pull ring for long lasting and quick hose attachments. Maximum operating pressure: **200 PSI**.



Description	Part #	Price/E	Opt Qty
complete	DGH7	\$11.70	25
plug	DGH7P	3.40	25
coupler	DGH7C	8.30	25
seal	DGHW7	.70	25
valved coupler - water shutoff	DGH7CV	12.95	25
complete assembly - valved	DGH7V	17.25	25

Push-On Fittings

Rigid Tube Hose Barbs

Hose ID	Tube OD	Part #	Price/E	Opt Qty
1/4"	3/16"	294-0403	\$2.80	100
1/4"	1/4"	294-0404	2.00	100
1/4"	5/16"	294-0405	2.45	100
3/8"	3/8"	294-0606	2.70	50
1/2"	1/2"	294-0808	3.85	50
5/8"	5/8"	294-1010	7.15	25
3/4"	3/4"	294-1212	8.45	25



Hose Menders

Hose ID	Part #	Price/E	Opt Qty
1/4"	BPM2	\$2.30	100
5/16"	BPM25	2.50	100
3/8"	BPM3	2.65	50
1/2"	BPM4	4.25	50
5/8"	BPM5	5.75	25
3/4"	BPM6	6.65	25



©
Brass

90° Hose to Male NPTF Elbows

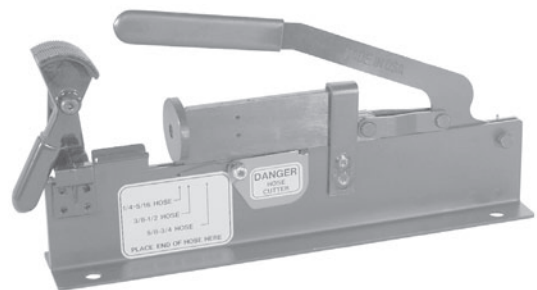
Hose ID	NPTF Thread	Part #	Price/E	Opt Qty
1/4"	1/8"-27	273-0402	\$3.70	100
1/4"	1/4"-18	273-0404	4.50	50
3/8"	1/4"-18	273-0604	5.10	50
3/8"	3/8"-18	273-0606	6.25	25
1/2"	3/8"-18	273-0806	7.95	25
1/2"	1/2"-14	273-0808	9.80	25
3/4"	3/4"-14	273-1212	18.90	25



Tools for Push-On Fittings

- cuts push-on style hose and inserts the fitting
- Built-in cutter slices through 1/4" - 3/4" ID reinforced push-on hose without fraying.
- Clamp hose into tool's vice and apply light pressure on handle to drive in the fitting.
- tool has four 7/16" diameter mounting holes for bench mounting
- overall size is 13-1/2" long x 2-3/8" wide x 7" height

Size	Part #	Price/E
all	270AT	\$768.35



Assembly Instructions:

1. Trim hose end with smooth square cut
2. Lubricate either push-on fitting, hose or both.
3. Insert push-on fitting into hose until first barb is in hose.
4. Place end of fitting against a flat object (bench, wall, etc.) and grip the hose one inch from end. Push with a steady force until end of hose is covered by yellow plastic cap.

Disassembly Instructions:

1. Leaving push-on fitting in place, make a 1" cut in the hose along the barbed end of the fitting. Note: Be careful not to nick barbs when cutting the hose.
2. With firm grip on hose, give a sharp downward pull to release the fitting from the hose.

Caution: Push-on fittings will properly grip push-on hose only when pushed all the way in, with the cut end of the hose completely concealed by the plastic cap.

SAFETY
ALERT

Brass Barbed Hose Fittings

Male Inserts



Hose ID	NPTF Thread	Part #	Price/E	Opt Qty	Hose ID	Tube OD	Part #	Price/E	Opt Qty
1/8"	1/8"	BN11	\$1.45	100	1/2"	1/4"	BN42	\$2.40	50
1/8"	1/4"	BN122	1.85	100	1/2"	3/8"	BN43	2.50	50
3/16"	1/8"	BN151	1.50	100	1/2"	1/2"	BN44	3.50	50
3/16"	1/4"	BN152	1.90	100	1/2"	3/4"	BN46	5.35	25
1/4"	1/8"	BN21	1.55	100	5/8"	3/8"	BN53	3.00	50
1/4"	1/4"	BN22	1.55	100	5/8"	1/2"	BN54	3.90	25
1/4"	3/8"	BN23	2.40	100	5/8"	3/4"	BN56	5.30	50
1/4"	1/2"	BN24	4.85	50	3/4"	1/2"	BN64	4.35	50
5/16"	1/8"	BN251	1.65	100	3/4"	3/4"	BN66	5.10	25
5/16"	1/4"	BN252	1.90	50	1"	3/4"	BN86	6.55	25
5/16"	3/8"	BN253	2.40	50	1"	1"	BN88	10.65	10
3/8"	1/8"	BN31	1.90	100	1-1/4"	3/4"	BN106	13.25	10
3/8"	1/4"	BN32	1.55	100	1-1/4"	1"	BN108	14.15	10
3/8"	3/8"	BN33	2.40	50					
3/8"	1/2"	BN34	4.20	25					
3/8"	3/4"	BN36	5.55	25					

Solid Female Inserts



Hose ID	NPTF Thread	Part #	Price/E	Opt Qty	Hose ID	Tube OD	Part #	Price/E	Opt Qty
1/8"	1/8"	BF11	\$1.75	100	3/8"	1/8"	BF31	\$2.15	100
1/8"	1/4"	BF12	3.00	100	3/8"	1/4"	BF32	2.20	50
3/16"	1/8"	BF151	1.95	100	3/8"	3/8"	BF33	2.90	50
3/16"	1/4"	BF152	2.65	100	3/8"	1/2"	BF34	4.20	50
1/4"	1/8"	BF21	1.75	100	1/2"	1/4"	BF42	2.65	50
1/4"	1/4"	BF22	2.25	50	1/2"	3/8"	BF43	3.35	50
1/4"	3/8"	BF23	2.65	50	1/2"	1/2"	BF44	4.20	50
5/16"	1/8"	BF251	2.40	100	3/4"	3/4"	BF66	7.35	25
5/16"	1/4"	BF252	2.65	100	1"	3/4"	BF86	8.20	25
5/16"	3/8"	BF253	3.15	100	1"	1"	BF88	14.65	10

Hose Menders



Hose Size	Part #	Price/E	Opt Qty
1/8"	BM1	\$1.60	100
3/16"	BM15	1.50	100
1/4"	BM2	1.60	100
5/16"	BM25	1.65	100
3/8"	BM3	1.90	100
1/2"	BM4	2.60	50
5/8"	BM5	3.35	50
3/4"	BM6	4.25	50
1"	BM8	7.40	10

Tuff-Lite Hose x Hose Elbows

- Parts showing package quantities are sold in package quantities only.

hose barb x 90° hose barb

Hose Shank	Nylon		Pkg Qty	Polypropylene		Pkg Qty
	Part #	Price/E		Part #	Price/E	
1/4"	TLSS22	\$1.17	50	PPLSS22	\$1.05	50
3/8"	TLSS33	1.21	50	PPLSS33	1.11	50
1/2"	TLSS44	1.35	50	PPLSS44	1.11	50
3/4"	TLSS66	1.42	50	PPLSS66	1.52	50



nylon



polypropylene

Hose x Male NPT Tees

- Parts showing package quantities are sold in package quantities only.

hose run x male NPT branch

Hose Size	Male NPT	Nylon		Pkg Qty
		Part #	Price/E	
1/4"	1/4"	TSST222	\$1.23	50
3/8"	3/8"	TSST333	1.35	50
1/2"	1/2"	TSST444	1.52	50
3/4"	3/4"	TSST666	1.68	25



Plastic

Hose x Hose Tees

- Parts showing package quantities are sold in package quantities only.

hose run x hose branch

Hose Size	Nylon		Pkg Qty
	Part #	Price/E	
1/4"	TSSS222	\$1.17	50
3/8"	TSSS333	1.21	50
1/2"	TSSS444	1.35	50
3/4"	TSSS666	1.42	25



Menders

- Parts showing package quantities are sold in package quantities only.

hose shank x hose shank

Hose Size	Nylon		Pkg Qty	Polypropylene		Pkg Qty
	Part #	Price/E		Part #	Price/E	
1/4"	TM2	\$.63	50	PPM2	\$.52	50
5/16"	TM25	.68	50	---	---	--
3/8"	TM3	.72	50	PPM3	.54	50
1/2"	TM4	.96	50	PPM4	.67	50
5/8"	TM5	1.48	50	PPM5	.74	50
3/4"	TM6	1.48	50	PPM6	.94	50
1"	TM8	1.82	25	PPM8	1.16	50



nylon



polypropylene